



RTS *Series*

tenteks.com.tr

Motorized
Rooftop
Awning



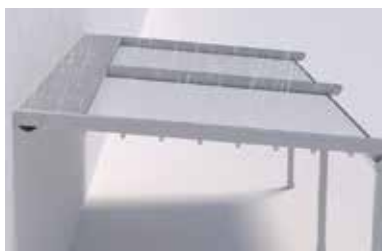
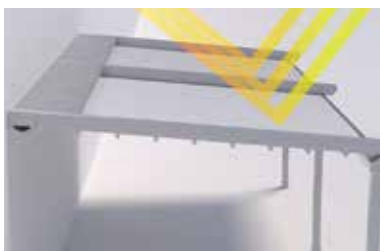
RTS *Series*

1300 | 1400 | 1600

RTS | MOTORIZED ROOFTOP AWNING

Motorized rooftop awning is a robust, long-lasting system that can be used in all weather conditions and functions with a reliable tensioning system and that it is adaptable to any facility such as exteriors of cafés, restaurants as well as gardens, terraces and patios of residences.

Thanks to the 3-layer fabric, the system protects the user from adverse UV effects of the sun in summer and rain and unfavourable conditions in winter. Rails and moving parts function silently and do not require frequent maintenance. Remote controlled, it is highly practical since the rooftop of the same area can be used wide open or fully closed. One can apply various enclosure options below the system around the facility to be able to obtain a fully isolated space, which offers you outdoor comfort of all seasons.



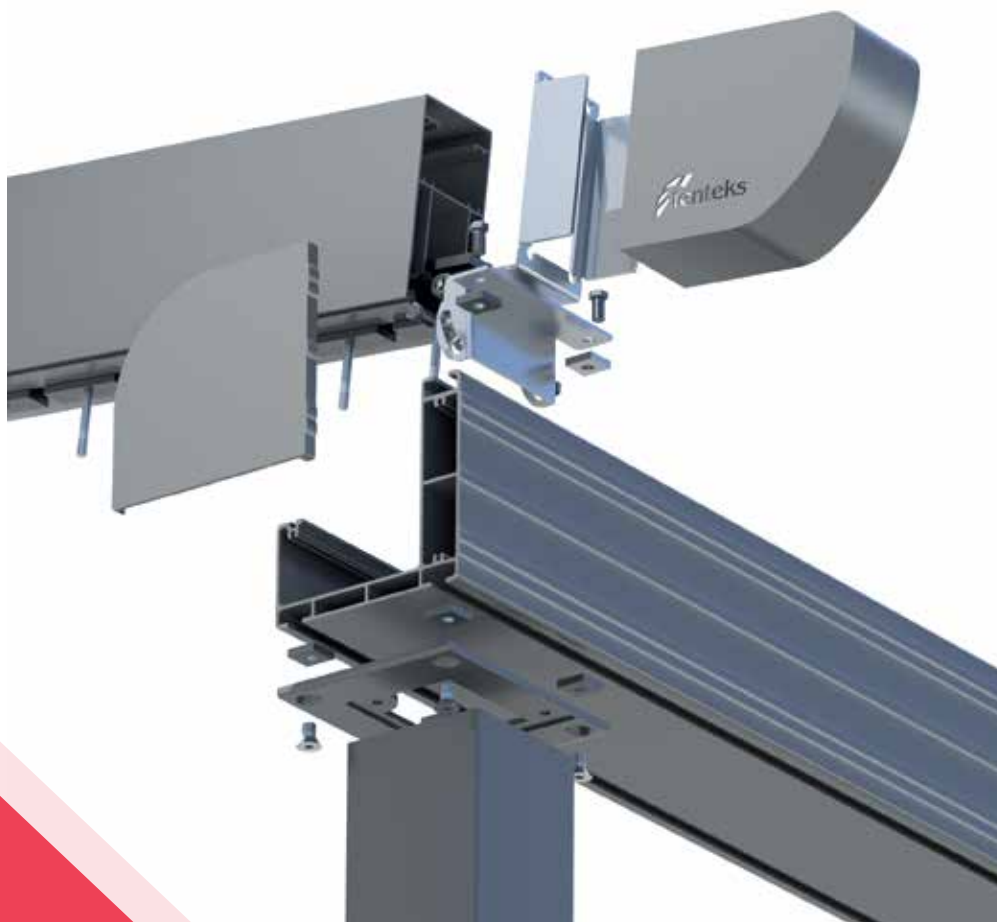
RTS 1300

70mm x 140mm
3.300gr/m



RAIL PROFILE

The rail profile on RTS1300 segment is 70mm x 140mm which weighs 3300g per meter. It is sturdy enough to extend up to 6 meters without any support such as additionally mounted steel profiles or tensioning support of any kind.



135mm x 135mm
5.000gr/m



FRONT POST PROFILE

The front post profile is 135mm x 135mm, which weighs 5000g per meter. Mounted on to the gutter from below, it drains rain water. Grooves within the posts help the assembly and disassembly of the system. Posts are designed in such a way they conceal screws.

30mm x 135mm **60mm x 120mm**
1.745gr/m 1.900gr/m



GIRDER / WINDOW REINFORCEMENT PROFILES

The girder is 135mm x 30mm, which weighs 1745g per meter. The size of window reinforcement profile is 150mm x 50mm, which weighs 2150g per meter and the size of the other window reinforcement profile is 120mm x 60mm, which weighs 1900g per meter.

140mm x 140mm
4.800gr/m



RAIN GUTTER

The rain gutter/front girder profile is 140mm x 140mm, which weighs 4800g per meter. This profile collects rain water and drains it through posts as well as add strength to the awning construction. Grooves on the profile ease the assembly of demounted system.

85mm x 6mm **50mm x 60mm**
1.800gr/m 1.000gr/m



FABRIC PROFILES

The fabric tensioning profile on motorized rooftop awning is 1800g. Positioned both at the frontmost and backmost of the fabric, this profile carries the fabric forwards and backwards, powered by the maximum tensioning force of the motor and profile's strength itself. Additionally, a single fabric beam profile is 1000g. Depending on the project, they are positioned at a certain distance to enhance the resistance.

The raw material of high alloy, extruded profiles is T5 6063 aluminum.

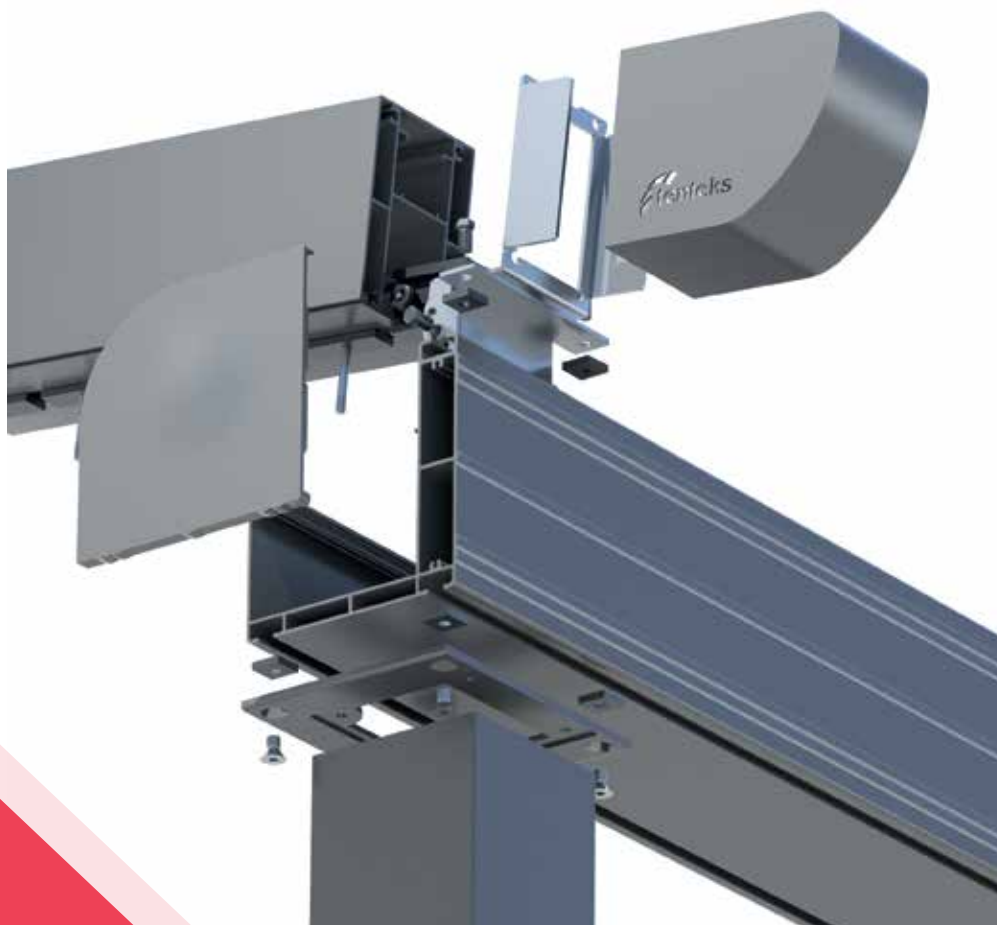
RTS 1400

100mm x 140mm
6.250gr/m



RAIL PROFILE

The rail profile on RTS1400 segment, is 100mm x 140mm, which weighs 6250g per meter. It is sturdy enough to extend up to 8 meters without any support such as additionally mounted steel profiles or tensioning support of any kind.



135mm x 135mm
5.000gr/m



FRONT POST PROFILE

The front post profile is 135mm x 135mm, which weighs 5000g per meter. Mounted on to the gutter from below, it drains rain water. Grooves within the posts help the assembly and disassembly of the system. Posts are designed in such a way they conceal screws.

30mm x 135mm
1.745gr/m

60mm x 120mm
1.900gr/m



GIRDER / WINDOW REINFORCEMENT PROFILES

The girder is 135mm x 30mm, which weighs 1745g per meter. The size of window reinforcement profile is 150mm x 50mm, which weighs 2150g per meter and the size of the other window reinforcement profile is 120mm x 60mm, which weighs 1900g per meter.

140mm x 140mm
4.800gr/m



RAIN GUTTER

The rain gutter/front girder profile is 140mm x 140mm, which weighs 4800g per meter. This profile collects rain water and drains it through posts as well as add strength to the awning construction. Grooves on the profile ease the assembly of demounted system.

85mm x 6mm
1.800gr/m

50mm x 60mm
1.000gr/m



FABRIC PROFILES

The fabric tensioning profile on motorized rooftop awning is 1800g. Positioned both at the frontmost and backmost of the fabric, this profile carries the fabric forwards and backwards, powered by the maximum tensioning force of the motor and profile's strength itself. Additionally, a single fabric beam profile is 1000g. Depending on the project, they are positioned at a certain distance to enhance the resistance.

The raw material of high alloy, extruded profiles is T5 6063 aluminum.

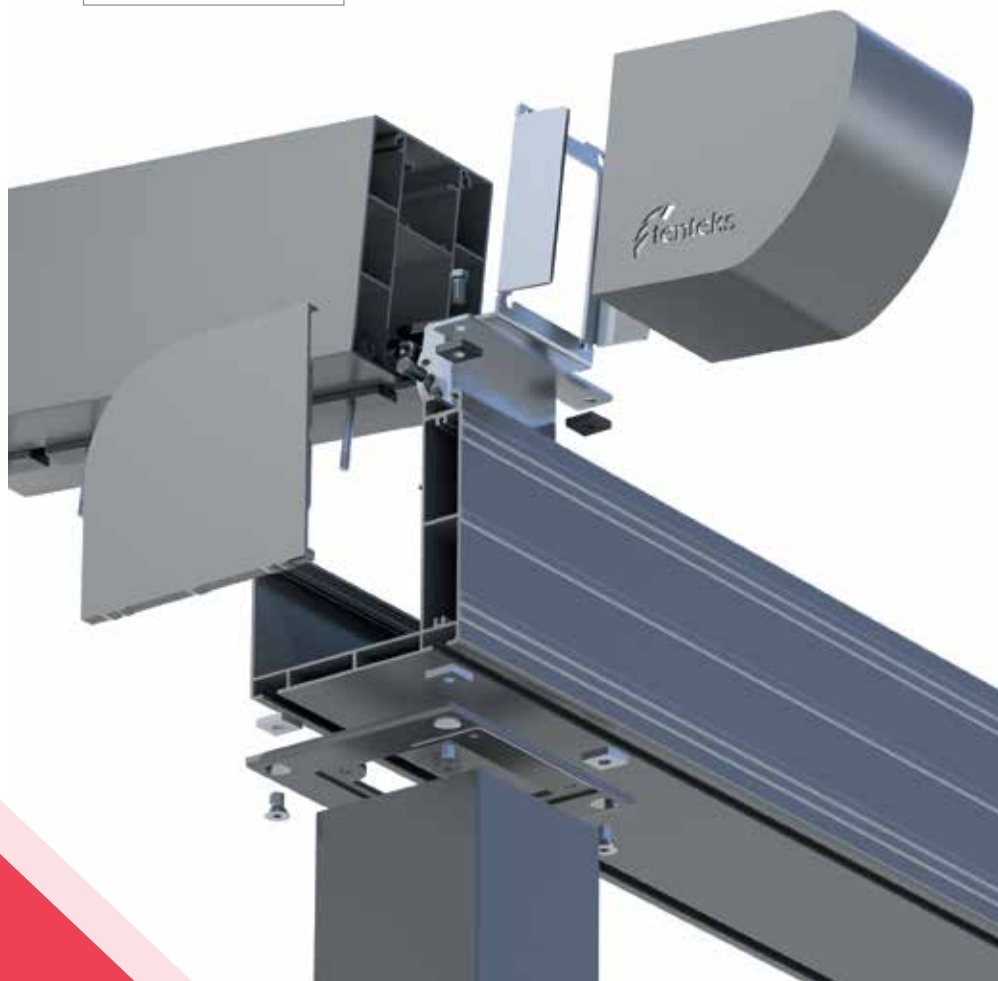
RTS 1600

125mm x 160mm
7.850gr/m



RAIL PROFILE

The rail profile on RTS1600 segment, is 125mm x 160mm, which weighs 7850g per meter. It is sturdy enough to extend up to 10 meters without any support such as additionally mounted steel profiles or tensioning support of any kind.



125mm x 125mm
4.350gr/m



FRONT POST PROFILE

The front post profile is 125mm x 125mm, which weighs 4350g per meter. Mounted on to the gutter from below, it drains rain water. Grooves within the posts help the assembly and disassembly of the system. Posts are designed in such a way they cancel screws.

30mm x 135mm **60mm x 120mm**
1.745gr/m 1.900gr/m



GIRDER / WINDOW REINFORCEMENT PROFILES

The girder is 135mm x 30mm, which weighs 1745g per meter. The size of window reinforcement profile is 150mm x 50mm, which weighs 2150g per meter and the size of the other window reinforcement profile is 120mm x 60mm, which weighs 1900g per meter.

160mm x 170mm
5.800gr/m



RAIN GUTTER

The rain gutter/front girder profile is 160mm x 170mm, which weighs 5800g per meter. This profile collects rain water and drains it through posts as well as add strength to the awning construction. Grooves on the profile ease the assembly of demounted system.

85mm x 6mm **50mm x 60mm**
1.800gr/m 1.000gr/m



FABRIC PROFILES

The fabric tensioning profile on motorized rooftop awning is 1800g. Positioned both at the frontmost and backmost of the fabric, this profile carries the fabric forwards and backwards, powered by the maximum tensioning force of the motor and profile's strength itself. Additionally, a single fabric beam profile is 1000g. Depending on the project, they are positioned at a certain distance to enhance the resistance.

The raw material of high alloy, extruded profiles is T5 6063 aluminum.

RTS *Series*

TENTEKS RTS SERIES

Tenteks RTS segment is a robust, demounted system whose joint pins and connectors are concealed.



FABRIC



Fabric used on motorized rooftop awnings is a 5-year guaranteed, block-out fabric. Our preference on fabric is SERGE FERRARI and SIOEN that are 3-layered, flame retardant and sunproof. Its PVC-based flexy characteristics make it the most suitable material against outdoor weather impacts.

SYSTEM



Functionality and operability of our awnings is under a 5-year guarantee against physical adversities.



MOTOR



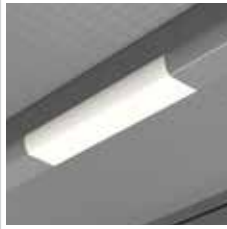
Functionality and operability of our awnings is under a 5-year guarantee against physical adversities.



BECKER

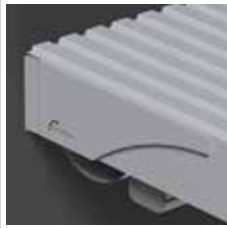
somfy®

RTS *Series*



LIGHTING

24 Volt led lightings are used on our motorized rooftop awnings (700 lumen–3000 kelvin–daylight). One piece is positioned in each sqm, integrated onto the system with custom-manufactured polycarbonate led socket mounted on fabric profile.



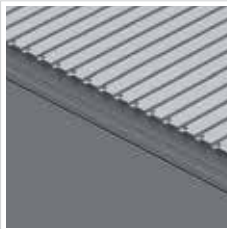
MOTOR CAP

Applied as the motor cap and on the parts of the motor tube facing sideways, it nicely blocks the sight of metal components and completes the aesthetic look of the entire system.



RAIL FRONT CAP

This part, made up of aluminum, powder-coated, same colored as guides and posts for a fine display is used to cover the front end of the guides through which carriers move.



ENGINE PROTECTION SHEET

Manufactured out of galvanized sheet, the protective sheet, mounted on top of the railed rooftop awning prevents the motor, joint pins and connector and rolled-back fabric from adverse weather conditions and external factors. It's powder-coated.



RAIN GUTTER SIDE CAP

It's used on gutters' parts facing sideways both for a sleek look and prevention of water drop. Mounted on the gutter with onboard connecting pins (screwless), the cap helps complete a monolithic look.

WATER DISCHARGE

The pooling water on fabric is directed towards the gutter and –with the help of the tilting position of the roof– drained through posts whose bottom parts are connected to the floor with stylish– looking aluminum cast material that provides both a sturdy floor grip and water drainage.



RAIN GUTTER CONNECTION APPARATUS

Thanks to this injection molded, high alloy, specially designed apparatus, two gutters are attached, which offers advantages such as prevention of isolation flaws at connecting ends and ensuring an aesthetic finish. It also helps the overall system to look monolithic in terms of design.



CARRIER CAR

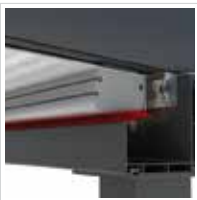
Carriers are the components that provide mobility of the fabric through railed guides. They are made out of polyamid whose raw material gets more strength and durability when exposed to outside effects.



INSULATION SEALS

Insulation seals, as the name signifies, provide insulation between the moving parts of the awning and the construction. They prevent water from entering indoors providing outstanding insulation by directing it to the gutter.

GUTTER



RAIL EDGE



BELOW THE BACK GIRDER



RTS *Series*



STANDARD



STANDARD WITH
DOUBLE SIDES



CURVED



CURVED WITH DOUBLE SIDES

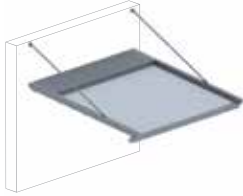


FLAT



FLAT WITH DOUBLE SIDES

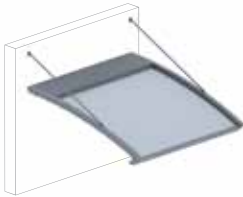
RTS APPLICATION STYLES



STANDARD WITH HINGED



STANDARD WITH DOUBLE
SIDES HINGED



CURVED WITH HINGED



CURVED WITH DOUBLE
SIDES HINGED



FULL CURVED



FLAT WITH HINGED



FLAT WITH HINGED
DOUBLE SIDES

midpoint

MIDPOINT

RTS1300







ARTERIA

RTS1600



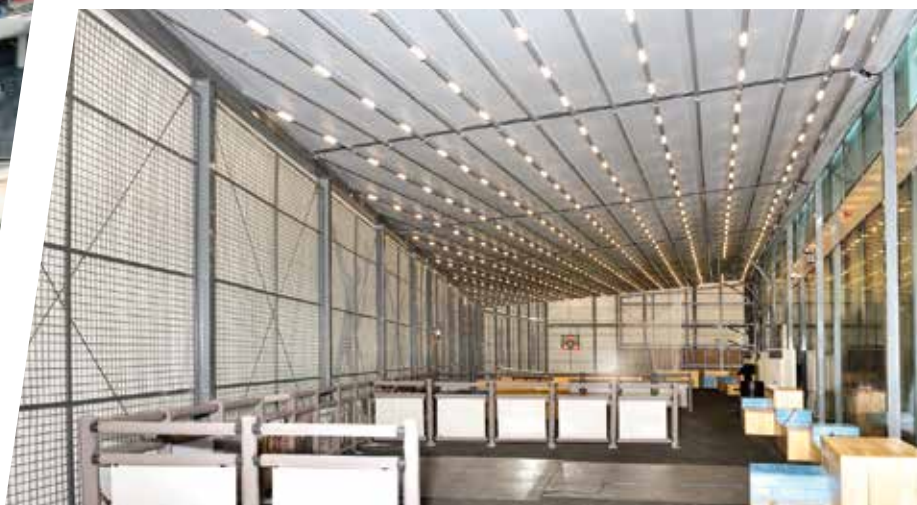


DECATHLON

DECATHLON

RTS1600



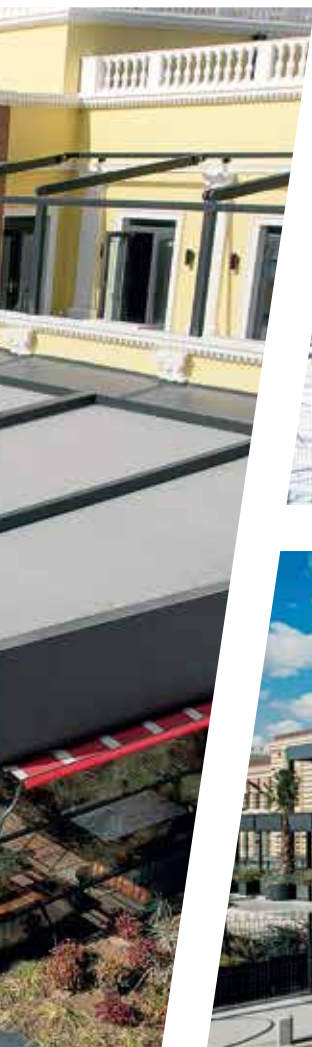




HAPPYMOON'S

RTS1600







444 7 857
T K S

Soğanlık Orta Mahalle Kaptan-ı Derya Caddesi 35/1A 34880
Kartal-İstanbul/TURKEY

export@tenteks.com.tr - info@tenteks.com.tr
www.tenteks.com.tr